

香川県

P Gourmet & Shopping & Activity Passport

English Version

TAKE
FREE

0 円



TAKAMATSU
KOTOHIRA
Tax-Free SHOP
with MAP



with
Discount
Coupon



TAKAMATSU
KOTOHIRA
GOURMET SHOP
SHOPPING STORE



高松 TAKAMATSU



JR Takamatsu Station
Chuo Shopping Area

0 50 100m

Shopping Arcade



18

(Ferry Landing)
for Shodoshima (Ikeda, Tonosho, Kusakabe),
for Naoshima (Miyanoura)

Takamatsu
Port

Takamatsu
Symbol Tower

Takamatsu Port
Passenger Terminal
Building

SunPort Takamatsu
Post Office

JR Hotel Clement Takamatsu

(Ferry Landing)
for Ogijima and Megijima
(High-speed Boat Landing)
for Shodoshima (Tonosho and Kusakabe,
for Teshima (Jeura),
for Naoshima (Honmura)

Kagawa Tourist Information Center
(Kagawa-Takamatsu Tourist Information)

6

Hotel AreaOne
Takamatsu I
Makiya

JR Takamatsu Station

Hotel AreaOne
Takamatsu II

Takamatsu
Guest House
Bj Station

Business Hotel
Lupinus

Business Hotel
New Gekkoen

Takamatsu
Terminal Hotel

Sanuki Hyoma Highway
(Seto Ohashi Dori)

Takamatsu
Century Hotel

Takamatsu Kita
Police Station

Business Hotel
Palace Takamatsu

NHK Takamatsu

Toyoko Inn
Takamatsu
Hyogomachi

Hyogomachi Shopping Street

Shinbancho Elementary School

Marunaka/supermarket

Hotel Fukuya

convenience store
Takamatsu Tokyu
REI Hotel

Takamatsu court of Appeal
District Court
Civil Court

Family Court
of Takamatsu

Takamatsu Chuo
Post Office

2 11
Mitsui Sumitomo
Insurance

3

Mitsukoshi-mae

Mitsukoshi

HOTEL
WAKABA

Kataharamachi Shopping Street

Katahara

Katahara

Kotoden
Katahara Station

Kitahama Alley

An old city feel and smell of the ocean... Walking around the old port town of Kitahama, you will encounter ivy-covered warehouses, fishing boats, and the wharf – all the heart-warming sights of a port. The retro-feeling of the warehouses adds flavor to the atmosphere, as galleries, boutiques, cafes, beauty salons and general shops mix together in the streets. Come and feel the slow and comfortable flow of time here.

🏠 4-14, Kitahama-cho, Takamatsu-shi 📞 087-811-5212 *10 min. walk from JR Takamatsu Station



Kitahama Alley

Rexxam Hall

Tamamo Park
(Ruins of Takamatsu Castle)

The Kagawa Museum

Business Hotel
Chateau-Est Takamatsu

Business Hotel
Toho Inn Takamatsu

Okura Hotel
Takamatsu



1 Marugame green lunch recommendations

Ootoya

Set menu starts at 698 JPY. Black and vegetables with black venegar set (851 JPY) Grilled Atka mackerel set (965 JPY) Chicken cutlet with plum sauce (698 JPY)



OMUCOCO

Popular Takamatsu omelette-rice specialty restaurant. Fluffy egg on butter rice, rice sauce variations are popular! Choose from 10 popular daily sets. There are extra toppings, large sizes and take out available. The popular mozzarella chicken with demi-glace sauce is 842 JPY, fresh tomatoes with cheese and basil is 810 JPY.



Amigo Morisaki

Lunch from 650 JPY. (extra rice and soup refill free of charge.) [Night menu (prices include rice and soup)] Sanuki Wagyu olive beef steak (225g) 2,250 JPY. Basil chicken (150g) 850 JPY. Amigo hamburger steak (225g) 1,200 JPY.



Ice cream for every customer

アイスクリームサービス

☎ 087-813-3566
🕒 11:00 a.m.-22:00 p.m.
📅 Holidays Open daily
👛 Credit cards are available.

Free salad and one drink

サラダドリンクSET サービス

☎ 087-851-7424
🕒 11:00 a.m.-20:00 p.m.
📅 Holidays Open daily
👛 Credit card not accepted

One free drink!

ソフトドリンク一杯サービス!

☎ 087-811-2009
🕒 11:00 a.m.-22:00 p.m.
📅 Holidays Open daily
👛 V, M, U, A, D, J, i, Union Pay

2 Lion dori Konpira Udon

[Udon]

This shop is famous for its firm udon noodles. We have a large menu, and we recommend the udon with thinly sliced beef. Tempura platter 1,200 JPY is also a great deal. We have soya udon set for three people 2,000 JPY, a very popular gift choice.

Opens till 2:30am

夜遅くまで営業しています。

📍 13-7 Furubaba, Takamatsu
☎ 087-823-4477
🕒 18:00 p.m.-2:30 a.m.
📅 Holidays Sunday (If Monday falls on a national holiday, it will be open on Sunday and closes on Monday)
👛 Credit card not accepted

Recommended



Raw Shoyu Udon set (3 servings) 2,000 JPY

3 Sushi Moriyama

[Sushi]

Assorted Sushi platter 2,000 JPY (local fish, sea urchin, roe, etc 9 pieces), 3,000 JPY (chutoro, eel, etc 10 pieces), boiled vegetables and salt-grilled fish, various a la carte dishes from 500 JPY, crab, fish pickled with miso. Hokkaido Shishamo and other grilled fish are also recommended. Chef's recommendation course from 4,000 JPY (appetizer, sashimi, grilled dish, stewed dish, sushi, dessert)

One free draft beer

生ビール一杯サービス

📍 7-1 Imajin, Takamatsu
☎ 087-822-0101
🕒 17:00 p.m.-24:00 a.m.
📅 Holidays Sunday * Closed on the last day of the consecutive holidays.
👛 VISA, MASTER, UC, AMEX, DC, DINERS, JCB, NC, UFJ, Union Pay

Recommended



Sushi platter (toro tuna, sea urchin, roe, eel, shellfish, etc)

4 Sushi Hana

[Sushi]

The restaurant has a relaxed and welcoming feel, and you can enjoy not only sushi but other exclusive seasonal dishes. You can start ordering with just one piece, but we invite you to try all sorts of dishes. We accept almost every domestic credit card.

Chef's recommended sushi platter 3,500 JPY-

3,500 円～おまかせ握り承ります。

📍 1F Suemoto Building, 5-9 Furubaba, Takamatsu
☎ 087-823-5423
🕒 17:00 p.m.-1:30 a.m.
(Sunday, holidays open till 22:00)
📅 Holidays Wednesday
👛 JCB, AMEX, DINERS, VISA, DC, JCBUC, NICOS

Recommended



You can start ordering with just one piece.
Chef's recommended sushi platter 3,500 JPY- (per serving)

5 Sake to Meshi no Hirai

[Izakaya]

We have clay pot dishes with sea bream and seasonal ingredients, in addition to other types of Japanese food rice cooked in clay pot. Enjoy in our spacious Japanese-style room. We are pleased to serve daily recommended dishes. Enjoy the fresh sashimi platter prepared on-site by our chef.

Ice cream for every customer

アイスクリーム人数分サービス

📍 2-1 Tojija, Takamatsu
☎ 087-811-5260
🕒 [Mon.-Sat.] 17:00 p.m.-1:00 a.m.
[Sunday and holidays] 17:00 p.m.-24:00 a.m.
📅 Holidays Open daily
👛 VISA, MASTER, UC, AMEX, DC, DINERS, JCB, NC, UFJ

Recommended



Sashimi Platter 3,480 JPY (for 4-5 person) * Course 5,000 JPY

6 Soyoa Takamatsueki-mae Branch **MENU** [Izakaya]

Enjoy fresh fish in Soyoa's sashimi platter - you won't go away hungry. Our shop serves hearty food prepared in our special way. We especially recommend our super fresh sashimi platter featuring seasonal fish. Please also try our extra juicy chicken-on-the-bone. Chicken-on-the-bone 580 JPY (tax not included), recommended fresh sushi platter has eight types of fish with three pieces 1,380 JPY (tax not included). We are also open for lunch.

You can enjoy fresh seafood everyday!

その日その日の新鮮魚介が楽しめます。

📍 ACE ONE Sunport Takamatsu 1F, 1-55 Hamano, Takamatsu
 ☎ 087-823-0581
 🕒 11:30 a.m.-14:00 p.m./ 17:00 p.m.-23:00 p.m.
 📅 Holidays No holidays.
 💳 VISA, MASTER, JCB, VISA, MASTER, AMEX, Union Pay



Set Course can be prepared from 2,000 JPY.

7 Teppanyaki Izagaya En **MENU** [Izakaya]

For your meal we have the famous Sanuki chicken-on-the-bone and more than 50 other hot plate grilled items, and you can enjoy these with your favorite drinks from a list of more than 100 alcoholic beverages. We recommend the handmade gyoza dumplings (6 pieces) 500 JPY. Tuna carpaccio 780 JPY. Chicken-on-the-bone 780 JPY. Beef tripe stir-fried with bean sprouts 780 JPY.

10% discount

ご飲食代金より
10%OFF

📍 1-18 Kajiya, Takamatsu
 ☎ 087-823-2777
 🕒 [Friday, Saturday, day before public holiday] 17:00-about 3:00
 [Weekdays, Sunday, public holidays] 17:00-about 1:00.
 📅 Holidays Open daily
 💳 VISA, MASTER, UC, AMEX, DC, DINERS, JCB, NC, UJF



Sashimi Platter 1,580 JPY (seasonal 5 different fish)

8 Zawatami Takamatsu Minami Shimachi Branch **MENU** [Izakaya]

The Japanese pub ZaWatami has a three hour all you can drink plan that you can enjoy at any time. We can also prepare all you can drink course menus to meet your budget and theme. All you can drink Malts is a bargain at only 3,000 JPY-. We recommend fresh sushi platter with 5 pieces. Come on in!

Ice cream for every customer

アイスクリームサービス!!

📍 1F-2F Takaraya Building, 12-5 Minami Shimamachi, Takamatsu
 ☎ 087-832-2955
 🕒 17:00 a.m.-15:00 p.m.
 📅 Holidays Irregular holidays *Please call to confirm
 💳 AEON, VISA, JCB, MASTER, AMEX, NICOS, DINERS, ORICONC etc.



Recommended



* All you can drink 3,000 JPY

9 ultrabake shop & coffee natural yeast bread and neldrip coffee [Bakery]

We select the best ingredients to make products that are good for you. We invest the plenty time so that you can enjoy all our baking. Our special Kheema curry bread and slightly sweet red bean bread are all made with natural yeast and the highest attention to detail. You can have them with a cup of neldrip coffee.

Open sandwich and soup set at 660 JPY

オープンサンドとスープのセット
660円始めました。

📍 1-5-7 Tokiwamachi, Takamatsu
 ☎ 087-802-3848
 🕒 11:00-19:00
 📅 Holidays Closed on Mondays and Sundays
 💳 Credit cards not accepted



Popular lunch choices include the soup plate and soup focaccia sets

10 Shikoku and Sanuki Pikaderi-ya **MENU** [Izakaya]

You can enjoy many delicious local dishes, from seasonal Seto Inland Sea fish to traditional Kagawa cuisine, Sanuki udon and 'chicken on the bone'. There are many local Kagawa and Shikoku sake and shochu options to accompany your order of Seto Inland Sea seasonal sashimi or local specialty beef 'Marbled Olive Wagyu Steak'. Parties of one also welcome!

One free Yuzu citrus sherbet per person.

ゆずシャーベットを
1人1個サービス

📍 9-5 Gurume-dori, Fukudamachi, Takamatsu
 ☎ 087-822-0091
 🕒 17:30-24:00
 📅 Holidays No holidays
 💳 MASTER, JCB, AMEX, DINERS, DC and UnionPay accepted



* Foreign language menu available.

11 Kadogen [Izakaya]

Starting with the Sanuki speciality chicken-on-the-bone, we have many savory chicken dishes. Chicken-on-the-bone is cooked slowly, making it a juicy treat. We have party courses as well, three types starting from 3,500 JPY. Prices are reasonable, but you will be pleased with the volume. Two-hour all you can drink course 3,500 JPY.

Ice cream for every customer

アイスクリーム
人数分サービス

📍 9-1 Hyakken, Takamatsu
☎ 087-851-2377
🕒 [Mon.-Sat.] 17:00 p.m.-23:00 p.m.
[Sunday and holidays] 17:00 p.m.-23:00 p.m.
Holidays Open daily VISA, MASTER, UC,
AMEX, DC, DINERS, JCB, NC, UFJ, iD



Chicken-on-the-bone 860 JPY (average cost of food per meal 2,000 - 3,500 JPY)

12 Seasonal food Dochiraika [Japanese cuisine]

You can enjoy seasonal fish and vegetables in our Japanese dishes. We prepare set lunch meals for a relaxed dining experience. In addition to a course set by our chef to go with your sake, we also have a la carte dishes for you to enjoy. Lunch sets start from 1,000 JPY.

Free draught beer for customers ordering Set Course.

コース料理ご注文の方
生ビール一杯サービス

📍 Nakamura Building 1F, 1-8 Kajiya, Takamatsu
☎ 087-851-9105
🕒 11:30-14:00 (Last order 13:30)
18:00-22:00 (Last order 21:30)
Holidays Sunday
 VISA, MASTER



* Seasonal Set Course from 3,800 JPY.

13 Hisagotei [Traditional cuisine]

Would you like to try the highest quality Kagawa recommended 'rare stonefish? You will be surprised at how delicious this fish is, in sashimi or fried. It is a scary looking fish, but the flavor is surprisingly delicious. Just right for a delicious Japan memory from your visit to Kagawa.

For those ordering the course menu,
today's recommended dish will be served.

コース料理ご注文の方に限り、
本日のおすすめ料理プレゼント

📍 6-20 Tsukiji, Takamatsu
☎ 087-822-1350
🕒 17:00 p.m.-22:00 p.m.
Holidays Sunday, Public holiday
 VISA, MASTER, JCB, AMEX, Diners



Sashimi of stonefish (prices vary according to the season) *Course : 3,000 JPY

14 Yotteya [Chicken-on-the-bone]

We are proud of our local specialty, chicken-on-the-bone, which we provide for low price and full taste. Finish your meal off with our light ramen noodles, which will always fit no matter how full you are. Just look for the roadside shop with the red lantern. We are sure you will find yourself wanting to stop and enjoy the nice atmosphere. Consumption tax will be charged.

10% off of single meals above 2,500 JPY.

一人 2,500 円以上の
ご飲食で 10%OFF

📍 7-16 Furubaba, Takamatsu
☎ 087-822-8250 🕒 17:00 p.m.-2:00 a.m.
Holidays Sunday(Monday will be closed if Sunday and Monday fall on the consecutive holidays.)
Closed once all the meals are sold.
 Credit card not accepted



Chicken-on-the-bone 850 JPY

15 Yakiniku Jinsuke **MENU** [Yakiniku BBQ]

Loved by the Japanese celebrities! We do not use any frozen meat in our barbeque dishes, and this shop is frequented by plenty of celebrities. Course meals 2,500 JPY (roast, belly, tripe, chicken thigh, rice, soup, vegetables, kimchi), draft beer, mixed drinks, soft drinks. The set meal comes with two drinks. If you want to enjoy barbeque at a reasonable price, Jinsuke is the best in Takamatsu!

Course : 2,500 JPY including 2 drinks

御食事コース 2,500 円
2ドリンク付

📍 2-9-9 Kawara, Takamatsu
☎ 087-834-8808
🕒 17:00 p.m.-24:00 a.m. (LO.23:30 p.m.)
Holidays Open daily
 VISA, MASTER, JCB, AMEX



* Set Course 2,500 JPY (includes 2 drinks)
* As this is a special menu, please order for the exact number of people.

16 Nikuryouri Hirai

【Beef】

The Kurogewayu brand "Wa-ichi-gyuu" is what we pay special attention to. The atmosphere inside is relaxed but mature, and you can truly enjoy the delicious ingredients in the meat dishes we prepare. Specialty: Premium seared beef sushi. 2 pieces 720 JPY

Ice cream for every customer

アイスクリーム
人数分サービス

🏠 9-3 Konya, Takamatsu
☎ 087-821-1822
🕒 【Lunch】 11:30 a.m.-14:00 p.m.
【Dinner】 17:00 p.m.-23:00 p.m.

Holidays Open daily
📷 JCB, VISA, MASTER, UFJ, NICOS etc.



Recommended



Kurogewayu steamed sirloin, single portion from 3,000 JPY
* Average budget 5,000 JPY.

17 Sanukiyakiniku an Japon

【Yakiniku BBQ】

Sanuki specialty "Sanuki Olive Beef", goes without saying. You can enjoy the full range of Japanese beef barbecue delights, from Kurogewayu to fresh tripe. You can also try the Sanuki Set of local beef, pork and chicken.

We have "Sanuki Olive Beef"!

香川の名産「讃岐(オリブ)牛」
あります！お気軽にどうぞ。

🏠 7-7 Furubaba, Takamatsu
☎ 087-811-9032
🕒 16:30 p.m.-24:00 a.m.

Holidays Sunday
📷 VISA, MASTER, UC, AMEX, DC, DINERS,
JCB, NC, UFJ



Recommended



* Average cost of food per meal 4,000 JPY

18 MIKAYLA

【Restaurant】

There is an ocean view from every seat in the restaurant, and comfortable ocean breeze on the terrace. We want all customers to enjoy the great setting along with all the fresh Setouchi seafood dishes. Charcoal barbecue pork shoulder sirloin 1,026 JPY. Daily seafood carpaccio 1,026 JPY. Olive beef bolognese 1,404 JPY.

One free draft beer

生ビール一杯サービス
(ドラフトビール)

🏠 8-40 Sunport, Takamatsu
☎ 087-811-5357
🕒 11:00-15:30 / 17:00-22:00 (Last Order 21:00)

Holidays Open daily
📷 VISA, MASTER, UC, AMEX, DC, DINERS,
JCB, NC, UFJ



Recommended



Set course from 6,264 JPY

19 Udon Ichiba Hyogomachi

MENU 【Udon】

Our udon use the highest quality wheat, and are kneaded into perfect condition. Then they are aged for another day. Kagawa specialties like 'chicken on the bone' and 'soy sauce beans' are also available. Information in the restaurant is also available in local languages to help visitors from overseas.

10% off for Udon gift sets, take-away 'chicken on the bone'

お土産のうどん、骨付鳥
持ち帰り 10%OFF

🏠 Hiranoya Building 1F
☎ 2-8 Hyogomachi, Takamatsu
☎ 087-823-0388

🕒 10:00-21:00 *Sunday, holidays 10:00-20:00
Holidays No holidays (closed for New Years)
📷 Not accepted



Special seaweed from Tokushima prefecture

Ichiba Kakeudon is the most popular dish at this shop.

Using olive eggs

Recommended



Foreign language information provided so overseas guests can enjoy to the fullest.

20 IRISH PUB THE CRAIC

【Irish Pub】

Certified by 'Guinness Best Pubs' for three consecutive years. There is a large selection of craft beers from all over the world. We pay special attention to temperature management and manner of pouring technique in order to provide the best beer. Takamatsu Bay Fish and Chips, using local fish, is a popular menu item. There is a wide range of dishes available on the menu.

Open for Happy Hour!
(Tuesday-Friday) between 17:59-20:00
(Food Set)
Pint+Fish&Chips 1,830 JPY-> 1,600 JPY

ハッピーアワー開催中!
(火~金) 17:59 ~ 20:00 の時間中
(フードセット)
Pint + Fish & Chips 1,830円 → 1,600円

🏠 2nd Floor, 7-8-2 Nishi-no-Maruchō, Takamatsu
☎ 080-5089-5735 Holidays Closed on Mondays
☎ 17:59-24:00 (last order at 23:00)

*[Sunday] 15:00-23:00 (last order at 22:00)
(Guests can still come in after 22:00, open on Sundays)
📷 *Not accepted (cash-only delivery system)



Recommended



Please try beers from all over the world

Recommended shopping sites in Takamatsu

1 Shikoku Shop 88 [Souvenir Shop]



We have chosen the best gift and specialty products from the four prefectures of Shikoku, in addition to local products of Kagawa. We normally have more than 1,800 items available - not only the best selling items but other newly discovered products that will please the discerning shopper looking for that special Made in Shikoku gift.



In addition to Kagawa specialty gifts, we have an assortment of Shikoku gifts as well.

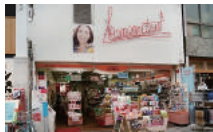
香川県の土産のほかに、四国のいろいろな土産を取り揃えています。

📍 Takamatsu Sun Port 2-1, Takamatsu Symbol Tower 1F
☎ 087-822-0459
🕒 10:00 a.m.-21:00 p.m.
📅 Holidays Open daily
📦 JCB, AMEX, DC, VISA, MASTER, AEON, DINERS, MUFG

2 Kanemitsu Cosmetics [Cosmetics Shop]



Shiseido Benefique, Qiora, Rivital Granas, d Program Maquillage, Shiseido Men, HINOKI, Kanebo, and other brand cosmetics are available.



Free cosmetic sample set for purchases over 3,000 yen.

3,000 円以上お買い上げで化粧品サンプルプレゼント

📍 10-2 Hyogo, Takamatsu
☎ 087-821-4606
🕒 10:00 a.m.-19:00 p.m.
📅 Holidays Sunday
📦 VISA, MASTER, DC, JCB, UC, NICOS, AMEX, DINERS

3 Nodaya Denki [Appliance Store]

Tax-Free



This is the only duty free electronic shop on the Takamatsu main shopping street. You will find many popular products on display, such as rice cookers, dryers, hot water pots, warm water wash toilet seats, shavers, vacuum cleaners and others. We have Panasonic, Zojirushi, Tiger, Dyson, roomba, Sony and all other brands.



One free LED key light for every purchase over 10,000 yen.

1 万円以上の購入で LED キーライト 1 個プレゼント

📍 1-6 Furuji, Takamatsu
☎ 087-851-4545
🕒 Sunday, public holidays
📅 Holidays Open daily 📦 China Union Pay, AMEX, VISA, MASTER, JCB etc.

4 ABC-MART [Shoe Store]



Men's and lady's casual shoes, business shoes, pumps, kids shoes all sold here. We also have limited ADB Mart brand products as well.



500 yen off on purchases over 5,000 yen.
1,000 yen off on purchases over 10,000 yen.

5,000 円以上お買い上げで 500 円 OFF
10,000 円以上お買い上げで 1,000 円 OFF

📍 2-9 Marugame, Takamatsu
☎ 087-811-9241
🕒 10:00 a.m.-20:00 p.m. 📅 Holidays Open daily
📦 VISA, MASTER, JCB, AMEX, SC, DC, UFJ, MC, NICOS, UC, Rakuten, NISSEN, DINERS, China Union Pay

5 Senkoya Marugame Branch [Cosmetics Shop]

Tax-Free



Skin Care, Make-up, Hair, Body, Beauty Foods. Shiseido, Albion, Elegance, Kanebo, SK-II, Kose, COSME DECORTE, COVER MARK, etc.



Free samples with purchases of more than one product.

1 商品以上お買い上げでサンプル品お渡し。

📍 12-4 Marugame, Takamatsu
☎ 087-821-9080
🕒 10:30 a.m.-19:30 p.m.
📅 Holidays 31 Dec. - 1 Jan. 📦 VISA, DC, UC China Union Pay, MASTER, JCB, etc.

6 Power Drug One's [Drug Store]

Tax-Free



We have a wide range of products, from medicines and cosmetics to health foods and supplements, and other daily products. We look forward to your visit.



Free cosmetics sample present on purchases over 3,000 yen.

3,000 円以上お買い上げの方に化粧品サンプルプレゼント

📍 4-9 Marugame, Takamatsu
☎ 087-811-4236
🕒 10:00 a.m.-20:00 p.m.
📅 Holidays Open daily 📦 VISA, MASTER, UC, AMEX, DC, DINERS, JCB, NC, UFJ

7 Drug Segami Tamachi Branch [Drug Store]

Tax-Free



We supply a wide range of health care services, including medicines, cosmetics, foods, drinks and daily products, with our slogan "we take the best care of you". Of course we accept all credit cards.



This is a duty free shop, where our foreign customers can shop comfortably.

外国のお客様も安心して買い物できる免税店です。

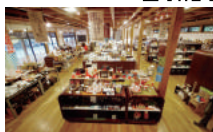
📍 1-1 Tamachi, Takamatsu
☎ 087-832-5775
🕒 10:00 a.m.-20:00 p.m. 📅 Holidays Open daily
📦 VISA, JCB, MASTER, UC, AMEX, DC, DINERS, NC, UFJ, China Union Pay

8 Kagawa Bussan-kan Ritsurin An [Souvenir Shop]

Tax-Free



Kagawa Bussan-kan "Ritsurin An", located next to the in Ritsurin Garden East Gate. This antenna shop deals in approximately 1,800 specially selected Kagawa products. Confections, foods, handicrafts, sake and other products abound. We have a duty free service counter for our foreign customers.



<http://www.ritsurin.jp/>
We deal in many types of Kagawa gifts.

香川のいろいろな土産を取り揃えています。

📍 20-16 Ritsurin, Takamatsu
☎ 087-812-3155
🕒 9:00 a.m. - park closing time
📅 Holidays Open daily 📦 VISA, JCB, MASTER, DC, NICOS, AMEX, DINERS, UFJ, Union Pay

9 Marugame Green

Tax-Free

Marukamecho Green is a commercial complex that was opened in spring 2012. There are select shops and restaurants that are available in Shikoku only here. The widely recognized lifestyle shop Loft and about 50 unique shops are lined up here, meaning that you can enjoy dining and shopping together. There are also many local specialty shops featuring Kagawa and Shikoku confections and other small goods. For example The Sanuki confectionery Onmai Louvre (West Bldg 1F) and Urban Research Doors (West Bldg 1F), and many other gift shops are located here.

📍 7-16 Marugame, Takamatsu
☎ 087-811-6600
🕒 Shop
11:00 a.m.-20:00 p.m.
🍽 Restaurant
11:00 a.m.-22:00 p.m.
📅 Holidays Open daily
👉 depends on shops.

Tax-free Shop
UNITED ARROWS green label relaxing (Mens / Ladies / Kids)
RADICA douce Harmonie (Ladies)
EYE EYE ISUZU bridal (Jewelry)
Ciaopanic (Mens / Ladies)
THE NORTH FACE (Outdoor)
URBAN RESEARCH DOORS (Mens / Ladies)
Onitsuka Tiger (Maes / Ladies / shoes)
ALEX COMFORT (Grocery Store)
CHARLEY (Cosmetics / Grocery store)
EYE EYE ISUZU G-Time (Watch Shop)
adidas Originals Shop (mens/ladies)
*As of November 2016



10 Kawaramachi FLAG

Kawaramachi FLAG has about 90 shops. With a direct connection to the Kotoden Kawaramachi Station, it is convenient not only for shopping, but provides space for tenants that are more deeply rooted in daily life – services such as education, culture and beauty – in addition facilitating interaction between visitors in general.



📍 1-3-1 Tokiwa, Takamatsu
Kawara Station
☎ 087-812-7000
🕒 Shop
10:00 a.m.-20:00 p.m.
🍽 Restaurant
11:00 a.m.-22:00 p.m.
Except for some shops.
📅 Holidays 1 January
👉 depends on shops



Fashion Shop
BEAMS (Mens / Ladies)
nano universe (Mens / Ladies)
Kate spade new york (Bag, Wallet, Accessories)
Rifare (Shoes and Bag Repairs)
PEARLY GATES (Mens / Ladies)
HANAGOROMO (Japanese Accessories)
Green Parks topic (Ladies)
QUEST KOBE (Women's shoes)
PAL'LAS PALACE (Ladies)
DISCOVERY BY ACID GALLERY (Ladies)
GRAN SAC' S (Bag, Wallet)
GRAYMAGIC (Ladies)
BLANCHIR (Ladies)
w closet (Ladies)
JACK (Ladies, Kids)
Alice (Lingerie)
ABC-MART (Shoes)
Lycee COLLECTION (Shocking, clothing and accessories)
The Green Tara (Accessories)
Perfect Suite Factory (Mens / Ladies)
Megane Super (Glasses)
Rene of Paris by FONTAINE (Wig)
Kodomo Fuku SUZUYA park (Baby / Kids)
Kickers (Shoes)

Goods Shop
LUSH (Fresh Handmade Cosmetics)
MARKS&SPENCER (Handmade Cosmetics and household goods)
unico (Interior and household goods)

- Grande Maree (household goods)
- SKINFOOD (Cosmetics)
- FABRIC'S (Interior and household goods)
- LIFE (interior and general goods)
- Nabe Store (Household goods)
- Rue Mon Chouchou × je ma moi (Household goods)
- Towel Museum (Household goods)
- air weave The Quality Sleep Store (Daily Use Products)
- LOGOS SHOP (Outdoor equipment)
- Omochaya-san no Soko (toys)
- Akakan Honpo (Baby shop)
- THE DAISO (Grocery shop)
- animega (Comics)
- Shugei Center Dream (Handmade goods)
- MARUZEN (Stationery store)
- Jukudo (Book store)
- JK Meshii (Comic, Character Goods)
- Oshare Koubou (Clothing Repairs & Alterations)
- You Yu English Conversation (English Language School)
- Hoken Madoguchi (Insurance)
- The Administrative Service Building Takamatsu
- IKEDO Kawaramachi (Administrative Service)
- Win School (Computer Course)
- Nichinoken (Tutorial School)
- CLINIQUE J (Plastic Surgery)
- DOCTOR'S Salon éclat (oil treatment)
- JEUGIA Culture Center (Culture classes)
- Grand Mere Kids Land / Kids Room (Nursery)
- lolve (Hot Yoga)
- Kajima Asahi High School (Correspondence High School)
- Niron Fukushi Academy (Qualification Preparation School)

Restaurant
STARBUCKS COFFEE (Café)
Seven Eleven (Convenience Store)
MJ BOOK CAFE (Café)
La Lanterna Da Salvatore (Italian Restaurant)
Kouji no teshigoto (Japanese Restaurant)
Yasoya no Tabi (Japanese Restaurant)
Sanuki no Ryoken (Kagawa local Products / Restaurant)
Cafe de aile (Cafe / Restaurant)
Kogane Noodle Factory (Udon, Japanese food)

Service shop
Fujisawa Clinic (Hospital)
Hyakujyushi Bank (Bank)
NAVI STATION (tourist information hub)
Carl's Nail (Nail Salons)
Studio Alice (Photography Studio)
Eyelash Salon Blanc (Eyelash extension)
mod's hair (Salon)
Eternal Labyrinth (Hair removal Salon)
Uranu no Toume-kari × Toume (galdun (Foretell) / Culture Course)
Maruge (Amusement / Playground)
Mabae (The genius School)

11 Omoriya

[Pickled Goods Shop]



This shop has more than 90 years history of providing Japanese food culture's healthy "pickles", here in The Pilgrim's Way Station Shikoku Takamatsu. "Pickles" are preserves, but we pay special attention to nutrients, as well as lactobacillus and yeast involved in the fermentation process. This Japanese health food is both flavorful and functional. Come on in and see!



The wide range of "pickles" that have been eaten since ancient times in Japan are popular gifts.

日本古来から食された色々な「お漬物」がお土産に人気です。

📍 10-3 Hyogomachi, Takamatsu
☎ 087-851-7913
🕒 10:00-19:00
📅 Holidays irregular holidays
👉 *credit cards not accepted

12 machi • kara

[gift shop]



machi-kara deals in a wide range of local products that involve seafood, mountain products. We pay special attention to ingredients and traditions, used in the products that are carefully produced by local producers. The udon and spices make perfect gifts, so please come visit!



We also have many popular gift items from Kyoto and Tohoku area that are the favorites of overseas visitors.

外国人観光客に人気の京都や東北地方のお土産もあります

📍 12-11 Marugame-machi, Takamatsu
☎ 087-802-1084 Holidays
🕒 10:00-18:30 Monday and New Years Day
*Some changes may apply from April 2017
👉 *Credit cards not accepted

KAGAWA Tax-free SHOP

INDEX

Takamatsu Area

p.2-9

Recommended activities

p.12-13

Shodoshima Area

p.14-15

Kotohira Area

p.12-13

9 Youme Town Marugame

Large shopping center. Food and daily products, fashion clothing, and dining specialty shops. *Not all of the shops are duty-free.

X SELL SUIT SELECT

150 Shinden, Marugame
0877-21-0123

10 COSMOS Pharmaceutical Zentsuji Branch

Discount drug store. Food, drinks, medicine, cosmetics are sold.

3322 Yogita, Zentsuji
0877-56-5850

11 Lady Drug Store Ayagawa Branch

Discount drug store. Food, drinks, medicine, cosmetics are sold.

745-1 Kayahara, Ayagawa, Ayuta
087-876-5588

12 Youme Town Mitoyo

Shopping center. Miscellaneous goods, food service, fashion clothing specialty shops. *Not all shops are duty-free.

22 Motoyamako, Toyonaka, Mitoyo
0875-62-6600

13 SUGI Bee Garden

Producer and seller of honey bee products. Food, drinks, cosmetics are sold.

802 Kotohira, Nakatado
0877-75-0538

14 Shimaya Manabe Kanpo Yakkyoku

Established 300-years ago in Kotohira. Traditional medicines, medicines are sold.

225 Kotohira, Nakatado
0877-75-3574

1 AEON Sakaide

Large shopping center. Food and daily products, fashion clothing, and dining specialty shops. *Not all of the shops are duty-free.

1-4-18 Kyomachi, Sakaide
0877-45-2111

2 COSMOS Pharmaceutical TakamatsuNishimachi Branch

Discount drug store. Food, drinks, medicine, cosmetics are sold.

774-2 Nishimachi, Takamatsu
087-812-5250

8 AEON Ayagawa

Large shopping center. Fashion W and dining specialty shops. *Not all of the shops are duty-free.

Petit Maison ASBee
Chuo Contact Mon Diad
LOGOS Shop THE BODY SHOP
YAMADA DENK Time Station ONE

822-1 Kayahara, Ayauta
087-876-8100

3 Don Quijote

General discount store. Food, drinks, cosmetics, fashion clothing are sold.

536kamitenjin, Takamatsu
087-815-0411

4 AEON Takamatsu Higashi

Large shopping center. Food and daily products, fashion clothing and dining specialty shops. *Not all of the shops are duty-free.

3-8-5 Fukuoka, Takamatsu
087-826-4111



5 Youme Town Takamatsu

Large shopping center. Food and daily products, fashion clothing, and dining specialty shops. *Not all of the shops are duty-free.



B-Three
Branshes
MATTRESSE SCOTCLUB
EDION

Murasaki Sports
X SELL
THE CLOCK HOUSE
TIME TIME

608-1 Sanjo, Takamatsu
087-869-7500



6 AEON Takamatsu

Large shopping center. Food and daily products, fashion clothing, and dining specialty shops. *Not all of the shops are duty-free.



ASBee
LASUD
Chuo Contact

SPORTS AUTHORITY
Time Station ONE

1-1 Kozaihon, Takamatsu
087-842-8000



7 MARUNAKA Ritsurin Minami Branch

Super market. Food, drinks, medicine, cosmetics are sold. *Not all of the shops are duty-free.



18 Nishihaze, Takamatsu
087-868-3033



Map Key & Legend

- Expressway
- National Road
- Major Highway
- JR
- Kotoden

- Shopping Center
- Drug Store
- Appliance Store
- Memorial Hall
- Souvenir store
- Watch Shop
- Jewelry Store

* Reference : Japan tax-free shop website
* As of December 2016

24 Yashima Daiichi Kenko Land

An integrated facility where you can enjoy accommodation, bath, dining and relaxation 24 hours a day.



2274-5 Yashima Nishimachi, Takamatsu
087-841-1126



15 Lady Drug Store Hayashi Branch

Discount drug store. Food, drinks, medicine, cosmetics are sold.



1183 Hayashi, Takamatsu
087-813-7073



18 Lady Drug Store Mure Branch

Discount drug store. Food, drinks, medicine, cosmetics are sold.



999-1 Mure, Mure, Takamatsu
087-818-9100



21 Lady Drug Store Higashikagawa Branch

Discount drug store. Food, drinks, medicine, cosmetics are sold.



852 Minato, Higashikagawa
0879-26-3480



16 COSMOS Pharmaceutical Ayagaka Branch

Discount drug store. Food, drinks, medicine, cosmetics are sold.



591-1 Kayahara, Ayagawa, Ayauta
087-876-8610



19 George Nakashima Memorial Gallery

George Nakashima Memorial Gallery, Japanese-American furniture designer.



1132-1 Omachi, Mure, Takamatsu
087-870-1020



22 EISAN Duty Free Shop Takamatsu Branch

Electronics, watches, cosmetics, daily goods, fashion clothes and general products sold.



212-5 Kanotsuno, Takamatsu
087-899-8111



17 COSMOS Pharmaceutical Manno Branch

Discount drug store. Food, drinks, medicine, cosmetics are sold.



1069-1 Yoshinoshimo, Manno, Nakatado
0877-58-8215



20 EYE EYE ISUZU Main Branch

Watches, jewelry, glasses are sold.



1523-1 Tahi Shimo, Takamatsu
087-864-5225



23 Way Station "Genpei no Sato Mure"

Local specialty products, light dining, outdoors rest spot facilities



631-7 Murechohara, Takamatsu
087-845-6080



Naoshima Island

Ogijima Island

Megijima Island

Inashiro

Takamatsu Airport

377

377

Activities in Kagawa Prefecture



Depart from JR Takamatsu Station (Sanuki Udon Bus Tour)

A trip to visit famous Sanuki udon shops, tourists sites and art attractions!

Enjoy the flavors of Kagawa Prefecture's soul food 'Udon' to the fullest.

*The bus tour leaves from JR Takamatsu Station, and you can get on/off at each bus stop. (See website for details)



Comfortable half-day plan

Adult 1,000 JPY
Child 500 JPY

Fixed Bus Pass Fare (one pax / tax included)

Operation Days Monday, Tuesday, Thursday

Morning Plan

JR Takamatsu Station Bus Port 9 (depart at 9:25)
to Yamakoshi Udon (approx 30 minutes)
to Miyatake Udon (approx 30 minutes)
to Gobancho (arrive at around 12:28)
to Takamatsu Tokyu REI Hotel (arrive at around 12:30)
to JR Takamatsu Station (arrive at around 12:35)

Afternoon Plan

JR Takamatsu Station Bus Port 9 (depart at 12:30)
to Waraya (approx 40 minutes)
to Udon Honjin Yamadaya (approx 30 minutes)
to Tamamo Park (60 minutes; end at around 16:05)

Operation Days Wednesday, Friday

Morning Plan

JR Takamatsu Station Bus Port 9 (depart at 9:25)
to Gamo Udon (approx 30 minutes)
to Machikawa Handmade Udon (approx 30 minutes)
to Gobancho (arrive at around 11:58)
to Takamatsu Tokyu REI Hotel (arrive at around 12:00)
to JR Takamatsu Station (arrive at around 12:05)

Afternoon Plan

JR Takamatsu Station Bus Port 9 (depart at 12:30)
to Waraya (approx 40 minutes)
to Udon Honjin Yamadaya (approx 30 minutes)
to Tamamo Park (60 minutes; end at around 16:05)

Relaxed One-Day Plan

Adult 1,500 JPY
Child 750 JPY

Fixed Bus Pass Fare (one pax / tax included)

Operation Days Saturday Holidays Sunday

JR Takamatsu Station Bus Port 9 (depart at 9:25)
to Yamashita Udon (approx 40 minutes)
to Marugame Castle or Inokuma Genichiro Museum of Modern Art (80 minutes)
to Nagata in Ka-no-Ka (approx 40 minutes)
to Zentsuji Temple (approx 60 minutes)
to Gobancho (arrive at around 15:58)
to Takamatsu Tokyu REI Hotel (arrive at around 16:00)
to JR Takamatsu Station (arrive at around 16:05)

JR Takamatsu Station Bus Port 9 (depart at 9:25)
to Nakamura Udon (approx 30 minutes)
to Kotohira Shrine for walk and paying respects (120 minutes)
to Okasen Handmade Udon (50 minutes)
to Gobancho (arrive at around 16:08)
to Takamatsu Tokyu REI Hotel (arrive at around 16:10)
to JR Takamatsu Station (arrive at around 16:15)

*You can get on at other bus stops.

*Customers pay for own food / drink and entrance fee.



Kotosan Bus Company

- ① Marugame Office/0877-22-9191 Takamatsu Office/087-851-3155
- ② 9:00-18:00 (Weekday) 9:00-16:00 (Sat/Sun/Holiday)

Udon Taxi

If it is Kagawa udon, leave it to us! We can introduce not only the well-known shops, but also those that are difficult to find, and others that are not listed in pamphlets and guidebooks. Our drivers have plenty of specialized knowledge of udon - they will explain everything from the history and culture of udon to how udon should be ordered and eaten.



Kotohira Bus Company
1228-1 Kotohiracho, Nakatado-gun
0877-73-2221
Reservation Center Reception
10:00-18:00



↑ Reservations here

Quick 60 minute course

*60 minute fee for 1 pax / 1 shop

2 pax / 2,350 JPY

2 pax / 2,350 JPY (4,770 JPY ÷ 2 people)

3 pax / 1,566 JPY

3 pax / 1,566 JPY (4,770 JPY ÷ 3 people)

4 pax / 1,175 JPY

4 pax / 1,175 JPY (4,770 JPY ÷ 4 people)

90 Minute Course

*90 minute fee for 1 pax / 2 shops

2 pax / 3,525 JPY

2 pax / 3,535 JPY (7,050 ÷ 2)

3 pax / 2,350 JPY

3 pax / 2,350 (7,050 ÷ 3)

4 pax / 1,762.5 JPY

4 pax / 1,762.5 JPY (7,050 ÷ 4)

120 Minute Course

*120 minute fee for 1 pax / 2-3 shops

2 pax / 4,700 JPY

2 pax / 4,700 JPY (9,400 ÷ 2)

2 pax / 3,133 JPY

3 pax / 3,122 JPY (9,400 ÷ 3)

4 pax / 2,350 JPY

4 pax / 2,350 JPY (9,400 ÷ 4)

*The number of taxis is limited, so please make an advance reservation by phone or email.



Mamehana - Wasanbon-making Experience

1-9-13 Hanazonocho, Takamatsu
TEL:087-831-3712

**Would you like to make some Japanese confectioneries?
If so, you can make a reservation here.→**



In this experience you can enjoy creating 'mamehana', the rare confectionery made with a wooden mold that is even hard to find in other parts of Kagawa. In the gallery you can see the products, made from 'wasanbon' sugar produced in Kagawa, and the wooden molds of the famous contemporary craftsman Ichihara Yoshihiro.

🕒 10:00-16:00

*Please let us know your desired dates and number of people.
Reservations at miya9820002000@yahoo.co.jp

Holidays Thursday

Ichigoya Sky Farm

656-1 Iidacho, Takamatsu
TEL: 087-881-5256

**Enjoy lots of delicious strawberries, Sky Farm
'Strawberry Picking' experience.**



←Reservations here

You will be able to enjoy these delicious strawberries at their peak time of freshness. You have 40 minutes to pick the strawberries, so you can find the ones you like and enjoy them at your leisure. The 'sachi-no-ka' type has just the right balance of sweet and tart, while the 'Sanuki hime' type, raised in in the warmth of the Seto Inland Sea, is delicious with its sweetness and fragrance. You will not tire of eating either variety. Inside the park you will also find a range of sweets using fresh strawberries - soft-serve ice cream, parfait and crepes.

🕒 10:00-17:00 (last entrance 15:30) **Holidays** Monday

*Please make reservations by email. Sky Farm Strawberry Picking
Season: January 3-mid May Fee: Middle school and up 1,600 JPY 3 years old through primary school 1,000 0-2 years old free

Yashima Daiichi Kenko Land

2274-5 Yashima Nishicho, Takamatsu
TEL: 087-841-1126

Would you like to experience Japanese bath culture? You don't need to take anything with you! This is one of Japan's largest health land facilities, with the full range of bathing, dining and entertainment options. 20 minutes on private bus from JR Takamatsu Station. There is also plenty of free parking.



At this large-scale spa you can get a full view of the Seto Inland Sea, and enjoy 11 different types of bath and sauna. There is also plenty of Japanese and barbeque dining, and there are large rooms if you need accommodation. 🕒 **Open 24-hours** **Holidays** No holiday

Entrance 2 hour course/864 JPY
Relax Plan/1,620 JPY

Accommodation price 2,700 JPY *Prices shown include tax.
There are extra fees for stays during Golden Week.

Way Station Genpei no Sato Mure

631-7 Murechohara, Takamatsu
TEL: 087-845-6080

Although this is a rest spot with dining and souvenir shopping, the adjacent Fusazaki Park has a wonderful view of the Seto Inland Sea. A place to drop in on if you are pilgrim or tourist.



Enjoy seasonal foods from the Seto Inland Sea at the seafood restaurant Kaizen Shokudo Jakoya, which also has a special Kagawa products corner. You will find products from Ishinomachi' Mure's distinctive anji stone artists and other monuments just next door.



Camping is not allowed.

🕒 Rest Stop Shinnendo/9:00-17:00

Jakoya (weekday) 11:00-14:00 (Sat/Sun/holiday) 11:00-15:00
Products Hall/Information Station (March-October) 9:00-18:00
(November-February) 9:00-17:00

Kotoden JR Kururin Ticket

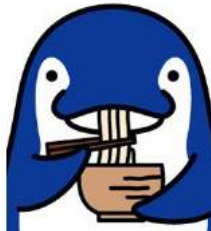
2-19-20 Ritsurincho, Takamatsu
TEL: 087-863-7721

This ticket is cheap and convenient, perfect for sightseeing around Kagawa. It is convenient for getting on and off any Kotoden line and selected JR lines.



Can be used for sightseeing and shopping along the train line. Can be purchased one month in advance of use. (Inform day of use when purchasing ticket)

Fee... Adults 1,960 JPY / Children 980 JPY
Usage area... all lines (Kotohira Line, Nagao Line Shido Line)
JR Selected lines / (Tokushima Line [Takamatsu-Shido]
Yosan Line [Takamatsu-Tadotsu] Tosa Line [Takamatsu-Kotohira])
Selling Stations... Kotohira Line / Takamatsu Chikko, Kawaramachi, Ritsurin Park, Kotoden Kotohira Nagao Line / Takamatsu Chikko, Kawaramachi, Nagao Shido Line/ Kotoden Shido



*Valid for the entire day, even on the last train, which may depart after midnight.

小豆島

Shodoshima Island



Legend

⊗ Police Station 7 Seven Bank

⊕ Post Office

⊕ 7

ATM that can withdraw Japanese yen with credit card

* As of December 2016

Island Sightseeing Bus

Cheap and convenient, running to and from Tonosho Port. You can see the entire island and its attraction sites in one day on this bus.



You can meet the monkeys at Monkey Land in Choshikei and take a mid-air walk to see the expansive view of the Seto Inland Sea on the ropeway (fare required) at Kankakei. At Hotokegatake on the Shodoshima Pilgrimage route, the temple and the rock blend together, and you can even enjoy the filming site gallery and lunch set of the famous movie "24-no-Hitomi". At the end, enjoy the warm environment of Setonai as you stroll through the Shodoshima Olive Park.

Tour Bus Fare

大人 (Adult) **¥4,100**

こども (Child) **¥2,050**

📷 お得な入園セット
(①鏡子溪+④二十四の埴球園村の入園セット)

大人 (Adult) **¥970**
こども (Child) **¥450**

※日本語ガイド(要予約) ※食事代は含まれておりません。

This includes bus fares only.

只含巴士費用 / 僅含巴士費用
버스 요금만 해당됩니다

Special-price admission ticket set
入場券优惠套票 / 優惠入場券套票
실속 있는 입장권 세트

📍 5873-10 Tonosho-Ko, Shozu-gun

☎ 0879-62-1203

🕒 Departure Time: 9:45-15:25

*Seats are limited, so please reserve by phone or email found on website.

Angel Kart public road go-karts

Tour around with new friends enjoying Shodoshima's pleasant breeze! Overseas guests are also welcome to use them.



Fee: 1 hour 2,000 yen; 2 hours 3,500 yen; 3 hours 5,000 yen

*extension fee 500 yen per 10 minutes (all fees are inclusive of tax and gasoline)

*options (optional insurance 1,000 yen per kart, theft insurance 500 yen per kart, costume rental 1,000 yen per outfit.)

📍 5878-2 Tonoshocho-Ko, Shozu-gun

☎ 0879-62-1428

🕒 9:00-(last return time) 18:00

*Karts are limited so please call ahead.



50cc minicar registration, helmet not required, no special skills needed.

Tsukudani Kyohotei [Local Specialties Shop]



Tsukudani is a traditional Japanese food made by boiling seaweed, other seafood, and mountain vegetables in sugar and Shodoshima soy sauce. In the shop you will find 100 types of tsukudani, with 30 of them available for tasting. The Shoyu Senbei crackers are made with soy sauce from the tsukudani production process, and are very popular!



Original Tsukudani gift with purchases of 500 yen and up.

500円以上お買い上げの方オリジナル佃煮プレゼント

📍 2211-28 Nouma, Shodoshimacho, Shozu-gun

☎ 0879-82-1441

🕒 8:30-17:00 **Holidays** No holidays

📄 MASTER, VISA, NICOS, UFJ, JCB, AMEX, Diners, MUFG, DC, UFJ, MasterCard

Shodoshima's only brewery Morikuni Brewery [Brewery]



In order to bring out the natural color and flavor of the rice, we do everything by hand, from packing into the bottle to sticking on the label. You can tour the brewery, and visit the annex building where there is a café and we sell sake and related products, handicrafts and handmade bread made from rice flour. This is the island's only brewery, so hope that visitors will enjoy seeing the traditional facilities.



📍 1010-1 Umaki-Ko, Shodoshimacho, Shozu-gun ☎ 0879-61-2077

Forest Brewery Morikuni Gallery **Holidays** Thursday

☎ (Shop/Gallery 9:00-17:00, Café 11:00-17:00)

MORIKUNI BAKERY **Holidays** Wednesday, Thursday

☎ (Shop 9:00-17:00)

Meeting place

Tonosho Tourist Center



出発
Departure
9:45

解散
Return
15:25



小豆島交通株式会社

金刀比羅宮

Kotohira-gu Shrine



📍 892-1 Kotohira, Nakatado 📞 0877-75-2121 📅 **Holidays** Open daily 💰 Free admission

Kotohiragu is nestled in the foothills of Zouzusan. Since ancient times, the Ocean God, known for bringing bountiful grain harvests, plentiful fish catches and successful business, has been worshiped by pious men and women from far and wide. A long time center of the people's worship, Konpira-san is famous for its long stone stairs. Stretching 785 steps to the main hall and 1,368 steps to the inner altar, the tough pilgrimage up each step is a small life journey. Reaching the top, many people are enthralled by a feeling of exhilaration. The site has been designated a national Important Tangible Folk-Cultural Property, and is a power spot that may grant you tomorrow's step-up!

The Yellow Charm of Good Luck and Mini-Konpira-Dog set can be received at the Main Hall (1,500 JPY). The Yellow Charm protects one from disease and disaster, and the includes wishes for health and happiness.

Konpira Grand Theatre (Kanamaruza)



📍 1241 Kotohira, Nakatado 📞 0877-73-3846 🕒 9:00 a.m.-17:00 p.m. 📅 **Holidays** Open daily
 💰 Adult 500 Yen Junior and senior high school students 300 Yen Elementary school students 200 Yen Discount for the group

The Konpira Grand Theatre is located at Kotohira-gu Monzencho in Kotohira-cho of Nakatado District, Kagawa Prefecture, and is the oldest surviving traditional theatre in Japan. Also known as Kanamaruza, and has been designated as a national Important Cultural Property.



Nakano Udon School



📍 796 Kotohira, Nakatado 📞 0877-75-0001 📅 **Holidays** Open daily
 🕒 Class open 9:00-15:00 Shop open 8:30-18:00
 💰 Udon Experience (2 pax and up) 1,620 yen / pax (15 pax 1,404 yen / pax)

We will teach you how to make real Sanuki udon in 40-60 minutes. After you make the noodles, you can taste them! Noodles you made yourself are especially delicious!



- Gourmet Shopping Store**
- 1** Kappo Dining Maruchu
 - 2** Konpira Udon
 - 3** Udon chaya Tentekomai
 - 4** Minato
 - 5** Nanahako
 - 6** Tanakaya
 - 7** Tengudou
 - 8** Nishikiya
 - 9** Meibutsu Kamado Kotohira Branch
 - 10** Konpirasan no Onamae Koubo
 - 11** Kinryu no Sato
 - 12** KyumanHopo Ishidaya

Legend

- ⊗ Police Station
- Ⓜ Post Office
- Ⓟ Parking
- Ⓡ Seven Bank
- Ⓜ Hotel
- 🏦 Bank
- 🚏 Limousine Bus Stop
- 🚏 Bus Stop

ATM that can withdraw Japanese yen with credit card

1 Kappo Dining Maruchu 【Kappo】

【Kappo Dining Maruchu】 is a restaurant located in a wooden building that uses 300-year old beams. Please enjoy the lunch buffet, featuring 50 items from Japanese, Western and Chinese cuisine (all you can eat, and bottomless soft drink). Monday-Friday/1,830 JPY (tax not included), Saturday-Sunday-Holidays/2,330 JPY (tax not included). The daily lunch is also popular. *Cash payment only for one group at one time. *Other tickets or coupons cannot be used in conjunction with this coupon. No cash exchange. *Not accepted at certain times during the New Year holiday.

Lunch Buffet Limited Discount (one person). 100 JPY discount with a group less than 2 pax, 300 JPY discount for 3 and above, 500 JPY discount for 10 and above.

※昼限定バイキング割引（お一人様につき）ご利用人数2名以下で100円引、3名以上で300円引、10名以上で500円引

🏠 Hotel Kobaitei, Nakatado-gun Kotohira-cho 556-1
 ☎ 0877-75-1111
 🕒 11:30 ~ 14:30 / 18:00 ~ 21:00
 📅 **Holiday:** There may be unannounced holidays.
 🗳 VISA, MASTERCARD, JCB, AMEX, DINERS, CHINA UNION-PAY, etc

Recommended

Lunch Buffet Monday-Friday/1,830 JPY (tax not included), Saturday-Sunday-Holidays/2,330 JPY (tax not included)

2 Konpira Udon

【Udon】

The tempura is straight out of the oil, hot and crispy! This is the complete opposite of the common site of tempura, croquettes and fried chicken that sit around after frying! We offer only hot and crispy, straight out of the oil. We recommend udon and special rice that goes perfect with it. They are a perfect match, so please give it a try.

10% discount on sets

定食及びセット類
10%OFF

📍 810-3 Kotohira, Nakatado
☎ 0877-73-5785
🕒 8:00 a.m.-17:00 p.m.
📅 **Holidays** Open daily
☑ We don't accept credit cards.



Mini-set A 870 JPY

3 Udon chaya Tentekomai

【Udon】

The 150-year old building, the oldest in Monzencho, was constructed during the Meiji era, in 1850. The building is surrounded by old trees, creating an atmosphere of character and history, where you can fully enjoy the power of real sanuki udon. Family and groups will also enjoy the charming yet bustling feeling of the restaurant.

**50JYP discount
of the Udon menu**

うどん代を 50 円割引

📍 714 Kotohira, Nakatado
☎ 0877-75-0001
🕒 9:30 a.m.-16:00 p.m. (売切れ次第終了)
📅 **Holidays** Open daily
☑ We don't accept credit cards.



Shoyu Udon is the most popular dish!

4 Minato

【Izakaya】

The shop boasts Kagawa's local gourmet specialty chicken-on-the-bone and fresh seafood. This Japanese food restaurant is loved by locals and tourists alike. Recommendations include chicken-on-the-bone (820 JPY), platter of popular skewers (750 JPY), seafood rice (1150 JPY). Please come in for lunch or dinner. We have an English menu ready.

One free icecream

アイスクリーム
プレゼント

📍 246-5 Kotohira, Nakatado
☎ 0877-75-2339
🕒 (Lunch)11:00 a.m.-14:00 p.m. (L.O 13:30 p.m.)
(Dinner)17:00 p.m.-23:30 p.m. (L.O 22:30 p.m.)
📅 **Holidays** Monday
☑ Credit card not accepted



Chicken-on-the-bone 820 JPY *Displayed prices do not include tax

5 Nanahako

【Izakaya】

At 785 you taste the fresh Kagawa oysters, directly supplied from Seto Inland Sea, to your heart's content. You can eat your fill of 'the milk of the ocean', enveloped in the smell of the sea. Prices are reasonable. The fried oysters are recommended. All you can eat : 3,000 yen for 90 minutes. Please drop by!

One free softdrink

ファーストドリンク
一杯サービス

📍 219 Kotohira, Nakatado
☎ 0877-73-0785
🕒 17:30 p.m.-23:00 p.m.
📅 **Holidays** Sunday
☑ We don't accept credit cards.



Fresh Kagawa oysters *All you can eat : 3,000 yen for 90 minutes.




6 Tanakaya

[Chicken-on-the-bone]

Tanakaya is a restaurant in the Konpira area that bustles with both local customers and tourists. You must try the savory and fragrant roasted chicken-on-the-bone. Please try this in-house juicy specialty that we are so proud of. There are many a la carte choices on the menu as well. We take reservations for group 5 of up to 50 people.

One free softdrink

ソフトドリンク
一杯サービス

-  685-11 Kotohira, Nakatado
-  0877-75-1884
-  11:00 a.m.-15:00 p.m.
17:00 p.m.-24:00 a.m.
-  **Holidays** Open daily
-  Credit card will be available.



Chicken-on-the-bone 840 JPY, popular dish of Tanakaya

7 Tengudou

[Souvenir shop]

This convenient souvenir shop has carvings, local gifts and sanuki udon. 5-minute walk from JR Kotohira station, 3-minute walk from Kotoden Kotohira station. Convenient transportation! There are English-speaking staff, so you can shop comfortably.



Free gift of Sanuki Udon set if you purchase more than 2,000 JPY

2,000円以上お買上げの方
お土産用さぬきうどんプレゼント

-  666-14 Sonota, Kotohira, Nakatado
-  0877-75-2604
-  **Holidays** Open daily 9:00 a.m.-16:00 p.m.
-  Credit card (Weekend and Holiday) not accepted 9:00 a.m.-18:00 p.m.

8 Nishikiya




[Souvenir shop]

We produce and sell soy beans and serve meals, too. Not only enjoy shopping, but please stop by to take a rest. We have free shoes and walking sticks for you to borrow. Before going up the Shrine, please come by!



Free Wasanbon sugar gift

和三盆のおかしプレゼント

-  696 Kotohira, Nakatado
-  0877-75-3264
-  10:00 a.m.-17:00 p.m.
-  **Holidays** Open daily
-  JCB, AMEX, VISA, MASTER, DINERS

9 Meibutsu Kamado Kotohira Branch

[Japanese sweets]

The famous Kagawa 'Kamado' confectionery is a representative example of Japanese sweets. We also have other types of popular Japanese and western sweets, in addition to soy beans and sanuki udon. We look forward to your visit.



This is a famous Kagawa product, cooked up in the shape of a traditional kamado pot, with yellow bean paste wrapped up into a Japanese sweet.

黄身館を包んだ生地をかまどの形に焼き上げた香川の名物です。

-  700-2 Kotohira, Nakatado
-  0877-73-3005
-  9:00 a.m.-18:00 p.m.
-  **Holidays** Open daily
-  VISA, MASTER

10 Konpirasan no Onamae Koubou






[Souvenir shop]

The shop offers wooden products, and all engraved pendants are 500 JPY (tax not included), all made on-site. We recommend this as a great memento of your trip to Japan!



No consumption tax

消費税分サービス

-  806-1 Kotohira, Nakatado
-  0877-73-4773
-  9:00 a.m. - 17:00 p.m.
-  **Holidays** Irregular holidays
-  Credit card not accepted

11 Kinryo no Sato

[Museum]
[Souvenir Shop]

Authentic sake-brewing in a traditional distillery with all the tools and production process. We hope that this will be the beginning of a new encounter with the Japanese culture of sake embodied in Kinryo-no-sato.



Free sampling inside the shop

館内でも推奨銘柄試飲 OK

-  623 Kotohira, Nakatado
-  0877-73-4133 **Holidays** Open daily
-  (Mon.-Fri.)9:00 a.m.-16:00 p.m.
(Weekend and Holiday) 9:00 a.m.-18:00 p.m.
-  MASTER, VISA, NICO, ULJ, JCB, AMEX, DINERS, Union Pay

12 KyumanHopo Ishidaya





[Tea House]
[Souvenir Shop]

At Ishidaya, the headquarters for the famous Kyu-man sweets, you can ease the fatigue of the Konpira pilgrimage with a refreshing snack and green tea. The retro-feeling of the shop is very Konpira.



One free postcard of Konpira

金毘羅の想い出に
絵ハガキを1枚進呈

-  798 Kotohira, Nakatado
-  0877-75-3220
-  7:30 a.m.-17:30 p.m. **Holidays** Open daily
-  VISA, MASTER, JCB, AMEX, DC, DINERS, Union Pay, UC, MUFG

Conversation by finger pointing

Gourmet food terms

何名ですか? How many people are you?	タバコは吸いますか? Do you smoke?	何になさいますか? What would you like?	これはなんですか? What is this?						
___ をください Please give me ___.	お決まりになりましたらお呼びください Please call me when you have decided on your order.	申し訳ありません、ただいま満席です I am sorry, we are full right now.	お手洗い Toilet						
メニュー Menu	おすすめ料理 Recommended dishes	揚げる Deep-fry	焼き Roast, grill	炒め Stir-fry	蒸す Steam	はい Yes	いいえ No		
生ビール Draft beer	ワイン Wine	ジュース Juice (soft drinks)	水 Water	ウーロン茶 Ulong tea	ビール Beer	氷 Ice	おしぼり Hand towel		
ライス Rice	パン Bread	生もの Raw foods	果物 Fruit	スープ Soup	肉 Meat	野菜 Vegetable	牛肉 Beef	鳥肉 Chicken	豚肉 Pork
灰皿 Ashtray	グラス Glass	箸 Chopsticks		ナイフ&フォーク Knife and fork		スプーン Spoon			
唐辛子 Chili	ラー油 Chili oil	塩 Salt	醤油 Soy sauce	大盛り Large portion	小盛り Small portion				

Payment conditions

クーポン Coupon	クレジットカード Credit card	現金 Cash	レシート Receipt	領収書をください Please give me a receipt.	会計お願いします I would like to pay the bill.
----------------	-------------------------	------------	-----------------	---------------------------------------	---

Shopping terms

いくらですか? How much is it?	いくつ必要ですか? How many do you need?	もっと大きい Larger	もっと小さい Smaller	日本製 Japan-made	あります There is, there are, we have	ないです There is no, there aren't any, we don't have
色 Color	サイズ Size	高い Expensive	安い Cheap, inexpensive	人気の Popular		
ラッピング必要 No need to wrap	試着 Try on	試食 Taste	商品を開けないでください Please do not open the products.			

If you know about it, the trip becomes even more fun!



Japanese common sense, manner guide

1 No bargaining

When shopping and purchasing souvenirs in Japan, the price displayed in the shop should be paid. Bargaining is not usually a part of the transaction.

2 There is consumption tax.

Consumption tax is charged on meals and shopping. Normally, this is included in the displayed price, but sometimes both the tax-inclusive and tax-exclusive prices are shown together.

3 The custom of removing one's shoes

When having a meal or trying on clothes, one should move onto the mats or carpet after removing the shoes.



4 There are (we have) cold drinks, too.

Ice is almost always put into water and soft drinks ordered at restaurants and cafes. Also, beer is not served at room temperature, but chilled thoroughly before being served.



5 Take-away food

Because of sanitation concerns, food that is not consumed cannot be packed for take-away.

6 In Japanese pubs, small hors d'oeuvres are served.

In Japanese pubs, a small dish may be served before the order is taken. The charge for these is usually between 300-400 yen. Different pubs have different rules, and the common practice is to simply follow the rules of each pub.



7 Things to pay attention to in the toilet

In Japan, it is common for the toilet to be equipped with water washing. Toilet paper should be flushed down the toilet after use.

Japanese bills and coins

The unit of Japanese currency is yen.

There are 1,000, 2,000, 5,000, 10,000 yen denomination bills, and 1, 5, 10, 50, 100 and 500 yen coins in use.



facebook

<https://www.facebook.com/kagawasightseeing?fref=ts>