



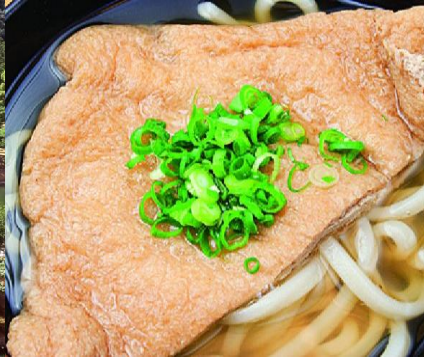
Sightseeing Course

Ritsurin Garden - Takamatsu City Center

Four Season Garden and Shopping Experience



A



B



C

◎From Takamatsu Station approx. 9:30 transfer to Ritsurin Garden by bus

◎From Takamatsu Airport approx. 9:00 arrival from Tokyo, depart on 9:25 airport limousine bus for 9:50 arrival at Rit

▶ 10:00

A Ritsurin Garden

A beautiful park with a landscape full of things to see. You can wander around the park, enjoying the natural feel of the surroundings. Enjoy olive tea and the famous Setouchi lemonade at the Garden

Related Info : TAK-SPOT001, TAK-cafe001

Walking transf

▶ 11:40

B Ueharaya

Self-serve style udon restaurant across from Ritsurin Garden. Heat up and put in your own soup - very popular among visitors. The noodles are cooked just right, and go perfectly with the dry sardine-based soup.

Related Info : TAK-udon002

Transfer by Shopping Rainbow Bus
Get off at Yume-town

▶ 13:00

Shopping at Yume-town or Don Quixote

Yume-town Takamatsu is one of the provinces best-known shopping malls. There is a wide range of shopping options, from clothing and food to various others. There is a Don Quixote nearby, with many inexpensive and popular products.

Related Info : KAG-depa002, KAG-depa003

Transfer by Shopping Rainbow Bus
Get off at Yume-town

▶ 14:30

Kagawa Provincial Museum

History of Kagawa prefecture from prehistoric to modern times is introduced through large scale exhibits and video. Visitors can try on traditional armor and helmets in the Study Experience Room on the first floor.

Related Info : KAG-tour009



Walking transf

▶ 16:00

C Kitahama alley and umie

Kitahama alley is an integrated commercial facility located in a renovated warehouse district near Takamatsu Airport. Inside is umie, a café owned and run by a designer. You can spread out and relax on the old sofa and furniture.

Related Info : TAK-cafe004

Transfer by Shopping Rainbow Bus Get off at Yume-town

▶ 17:30

Takamatsu Station